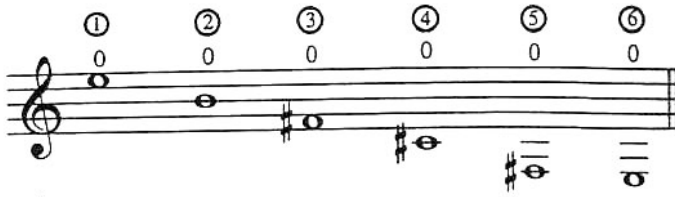
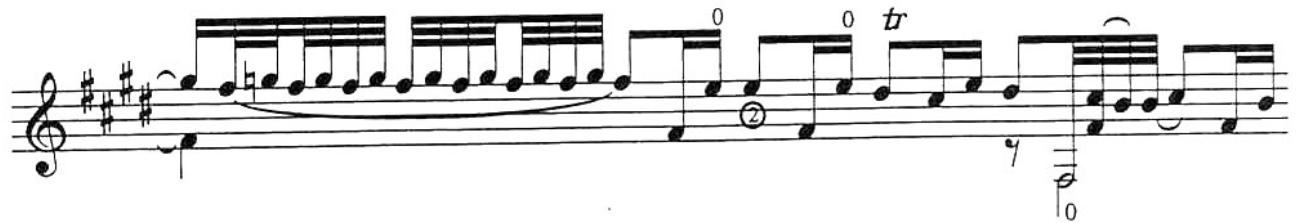
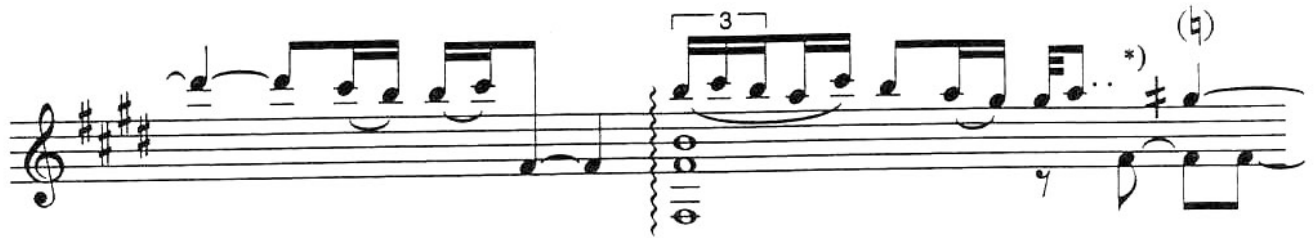
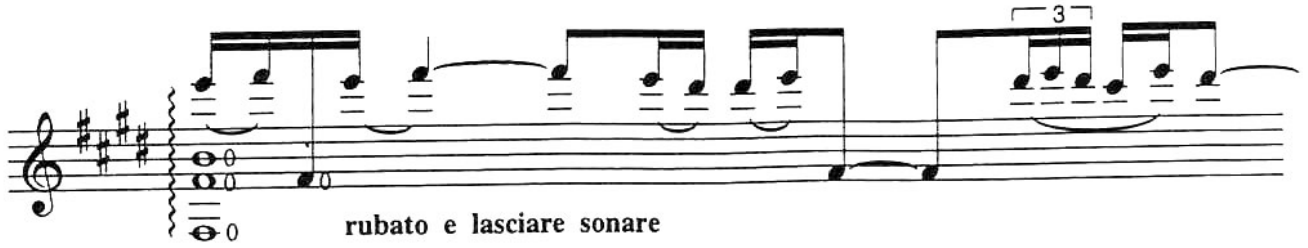


KARA TOPRAK

Composed, by Aşık VEYSEL
Arranged for guitar
by Ricardo MOYANO



♩ = 126 circa



*) ♯ Komalı sol (3. perde)
Bend G (3rd fret)

E.B. 1011

6

1 $\text{♩} = 90$

1 4 3 0 0 4 0 4 0 0 4

5

0 0 4 0

9

0 1 2 0 3 2 0 3 4 0 0 0

13

0 0 0 0

16

0 3 4 0 3 0 2 1 3 1 0

19

22

25

28

*) (b)

31

tr *m*
p *i* *p* *m* *i* *tr*

34

⊕ to Coda

*) ≠ Komalı sol (1. perde)
Bend G (1rd fret)

37

40

43

47

51

55

59

(b) (b) ② 1 2 4 0 0

63

tr *tr* 0 ④ 0 0 ④ 0

67

D.S. al ⊕

71

CODA

simile ...

74

simile ...

77

80

Measures 80-82: Treble clef, key signature of two sharps (F# and C#), 4/4 time signature. The melody consists of eighth and quarter notes, mostly on the lower staff.

83

Measures 83-85: Treble clef, key signature of two sharps. The melody continues with eighth and quarter notes.

86

Measures 86-88: Treble clef, key signature of two sharps. The melody continues with eighth and quarter notes.

90

Measures 90-93: Treble clef, key signature of two sharps. Measures 90 and 91 feature complex chords with multiple notes. Measures 92 and 93 continue the melody.

94

Measures 94-96: Treble clef, key signature of two sharps. The melody continues with eighth and quarter notes.

97

Measures 97-100: Treble clef, key signature of two sharps, 4/4 time signature. Measures 97-99 feature a complex rhythmic pattern with chords and eighth notes, with arrows indicating fingerings. Measure 100 is a whole note chord. A repeat sign is present at the end of the system.